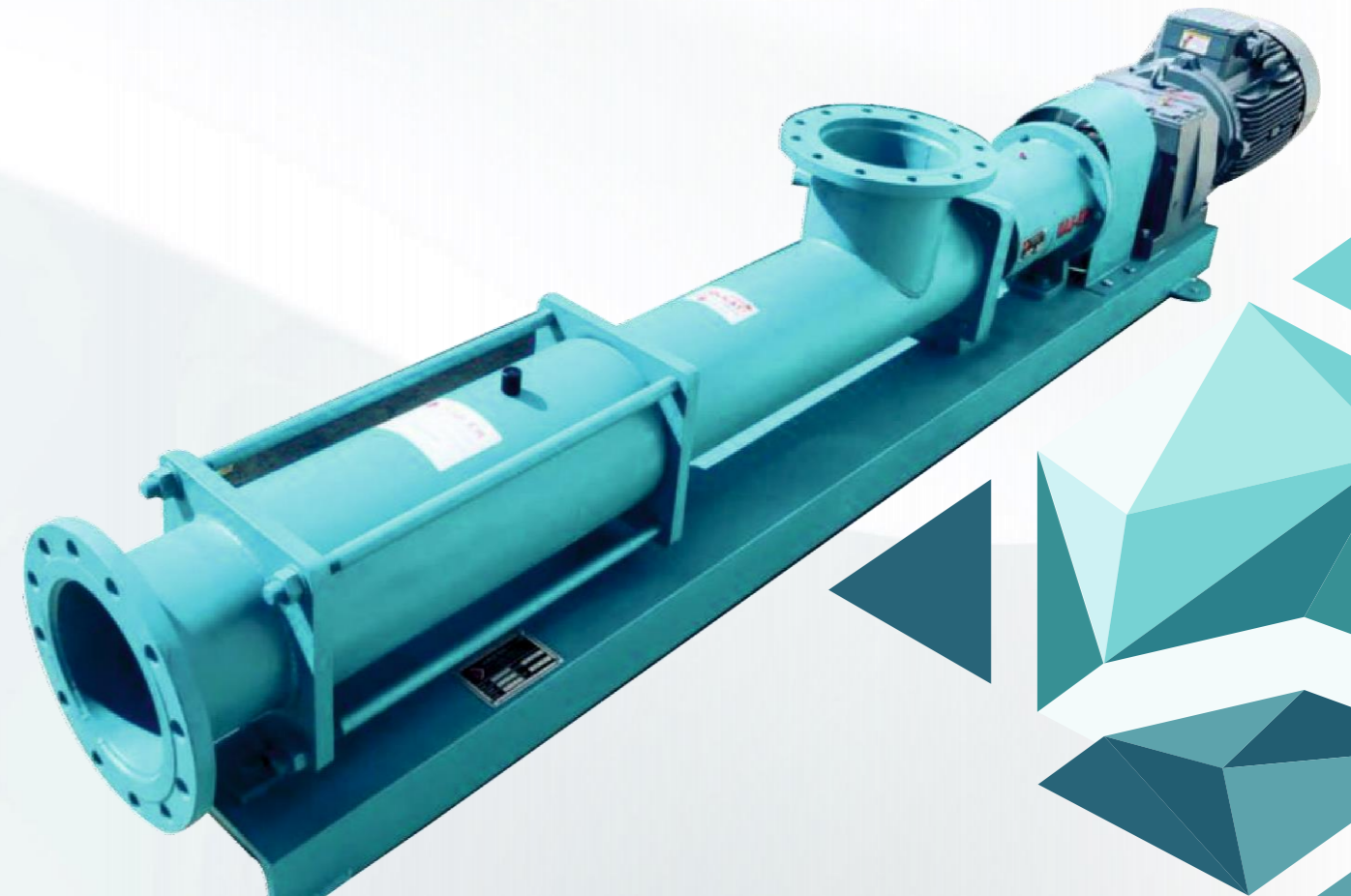




“Your solution partner in fluid transfer...”



Saray Mah. Saraykent San. Bol. 28. Sokak No: 6 K.Kazan / ANKARA
Tel: 0312395 35 24 Fax: 0312395 02 40
info@hasermonopomp.com
www.hasermonopomp.com





Our Founder: Hasan YAKISIR

► Our History

2000: Foundation of our Business

Our firm started its operations in 2000 manufacturing fruit juice and beverage industry machinery and spares by the initiative of our founder Mr. Hasan YAKISIR in OSTIM O.S.B. (Organized Industrial Zone); continued its operations in line with its customer portfolio and demands increasing every passing day.

2005

Activities were carried out on grape squeezing, destemming, and conveyor belts; the foundations of the production were laid, and the preproduction process of the mono pump started.

2007

Our market-entry with our own design and models we made for the product development. The first mono pump was manufactured with the product coding "HMU50" at that time and delivered to our customer in running condition.

2007 - 2010

With our developing portfolio increasing by demands for new molds and models, focusing on the stock status of the products became a principle; ISO 9001-2008 and CE certificates were obtained in addition to trademark registration and utility model certificates. " Supply of spares within a short time "

2011—2012

We needed a new storage and showroom in order to increase our production capacity and expand the stocking area and we started to serve our customers in IVEDIK O.S.B.

2012 - 2013

Our first export was to Abu Dhabi, U.A.E and upon customer satisfaction, it continued especially in Central Asia and South Africa.

2014 - 2015

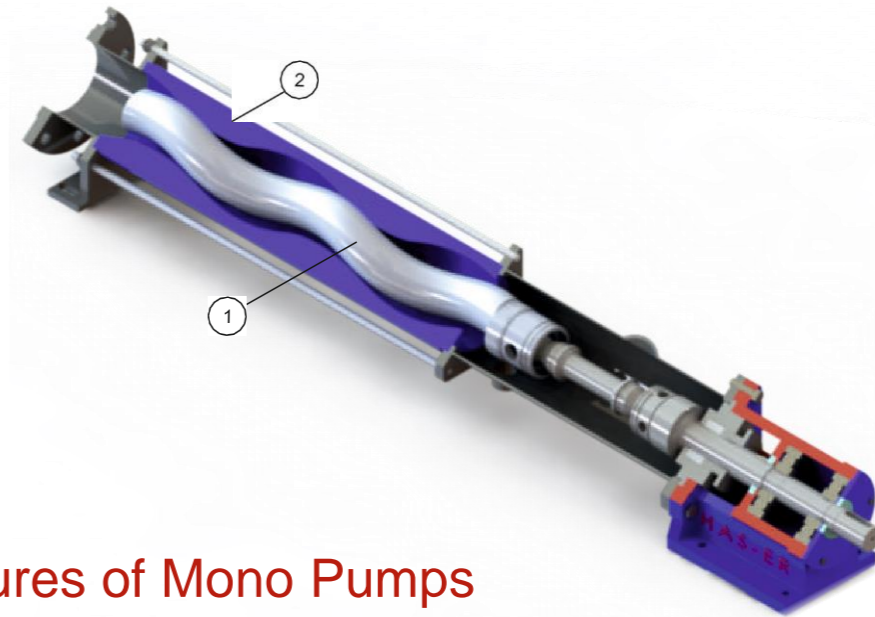
While our firm continued to grow and increase its product group, we manufactured the 20 BAR model with a production capacity of 70.000 L / H. Our firm focused on fairs and exhibition organizations in those years and paid many customer visits.

2015 - 2017

By paying attention on the wastewater treatment and sludge dewatering industry, our products improved customer satisfaction in the industrial market. The imported products used in the sector were replaced, spares and pump services were supplied within a short time by cooperating with institutions and private organizations.

2018 - 2019

Our firm moved to K.Kazan Saraykent Industrial Zone in May 2018 ; We moved to our new production facility with CNC controlled workbenches in 1.200 m2 indoor and 350 m2 outdoor area. We continue to develop and expand our product range and production capacity every passing day.

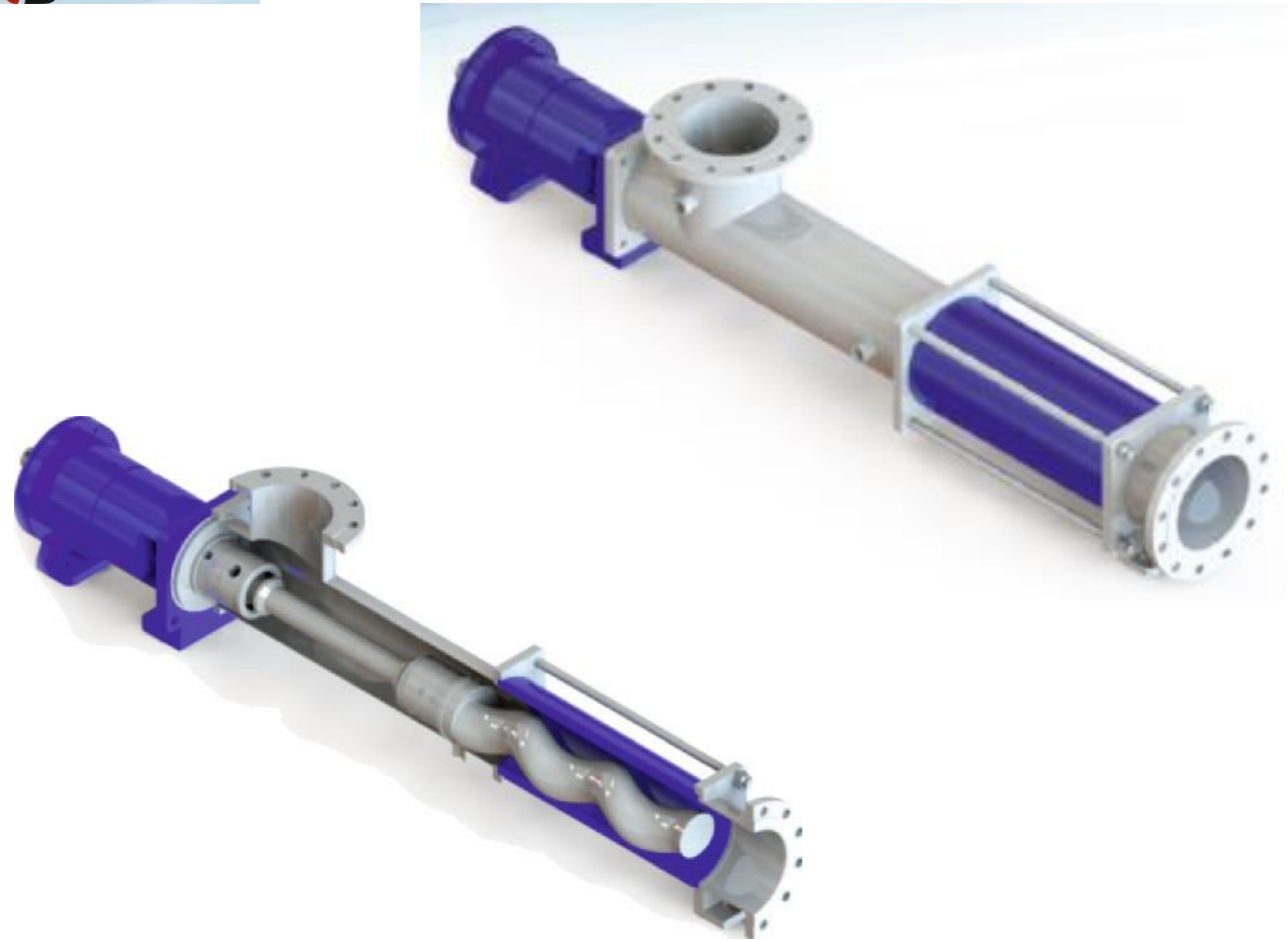


► Features of Mono Pumps

- It is known as mono pump (positive displacement pump), which does not spoil the properties of the product used for transferring fluid and semi-fluid products having high viscosity values. It ensures the transfer of products without any problem like foaming, separation, and disintegration.
- Our firm produces pumps with different capacity and pressure options and with an operating range of 5 L / H - 200.000 L / H - 0/24 BAR.
- It can run at temperatures between - 30 c / + 250 c without any trouble.
- It runs silently and vibration free, it can also run smoothly in open or closed areas when suitable conditions are provided.
- It offers portable or fixed assembly with its different versions.
- It offers an advantage in challenging areas requiring installation thanks to its suction feature. Max. 8 meters.
- It offers precise product transfer and control over fluctuation, continuous product transfer without interruption, dosing, and ratio. It runs linearly with flowrate measurement system.
- It offers a problem-free operation under suitable conditions in the range of 0 - 100 Hz, with the drive frequency control device (inverter).

► Working Principle of Mono Pumps

- As stated in the cross-section above, Part # 1 is called ROTOR / Part # 2 is called STATOR. With the action of the rotor shaft driven by the electric motor, the stator moves 360 degrees inside the slot. With the vacuum and compression occurring with this actuation, it enables the product in the pump to be transferred to the outlet pipeline in a compressed way by transporting it to the blanks. Since the stator has a rubber structure, it is resistant to stretching and deformation.

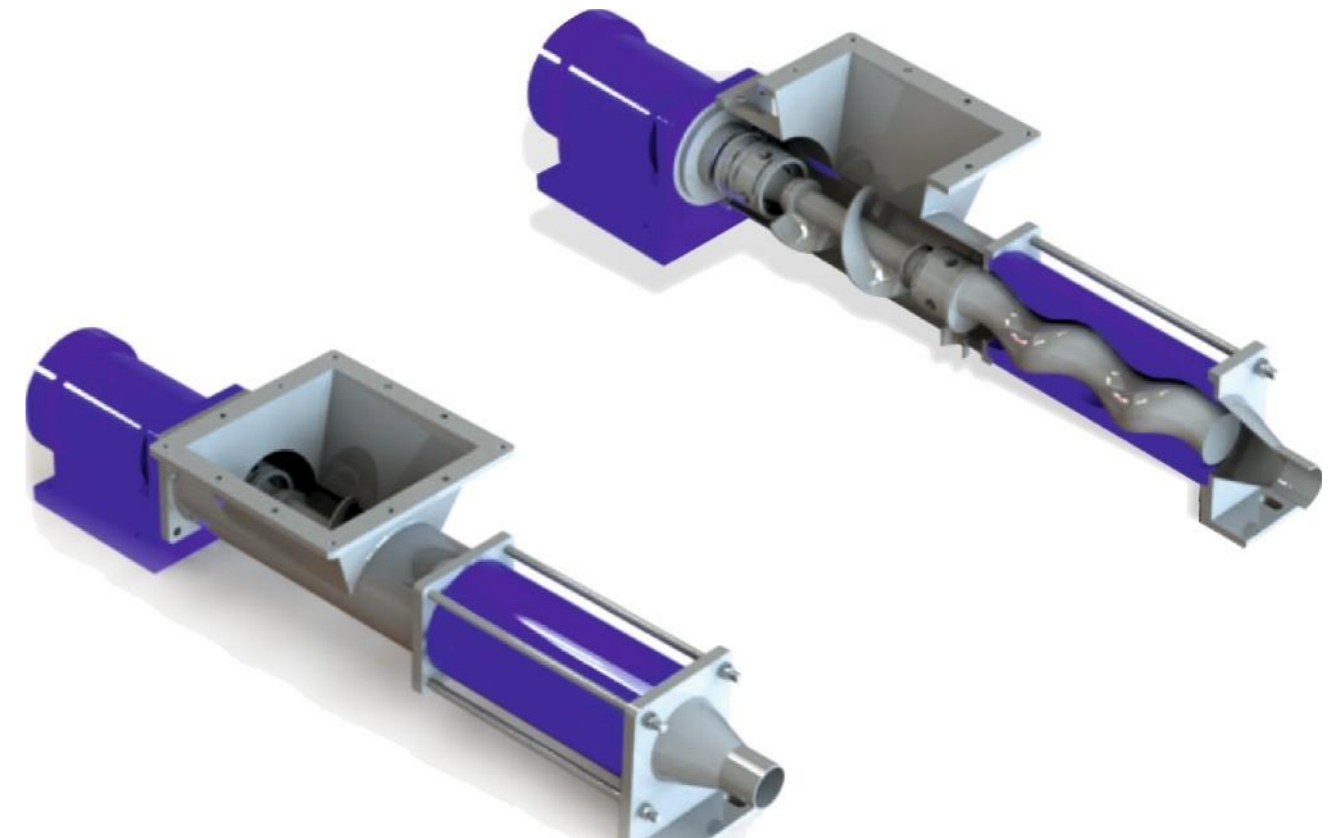


► FL-SERIES Mono Pumps

These pumps having a flange connection are mainly used in foods and industry, they are preferred when the vacuum is required in fluid and semi-fluid products. They have a robust, durable, and very ergonomic design, and become solution partners in many sectors with the advantages they provide.

Features and Advantages:

- High amount of suction Max 8 meters
- High performance Maximum 200 m³ / h and 24 BAR model range
- Low need for spares
- Pump inlet option connection at Right - Left - Upright positions
- Different customized sealing solutions (Smooth - Mechanical)
- Optional washing inlets and discharges
- Different solutions of stainless steel or other alloy steel equipment
- Different rubber types (EPDM - NBR - NR - VITON)

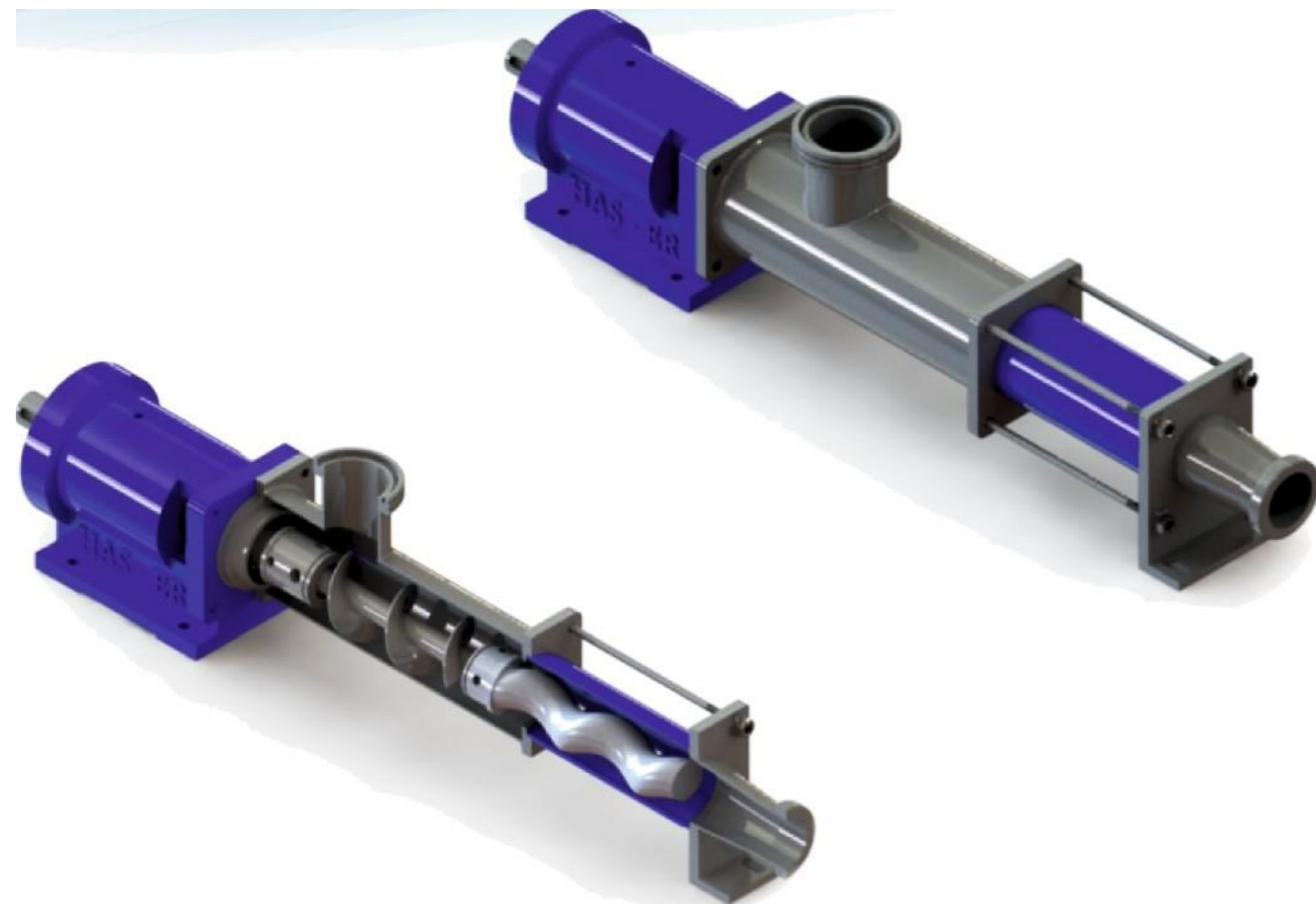


► AH-SERIES Mono Pumps

These pumps with an open-mouthed chamber inlet, are preferred in foods and industry. These models are used in non-viscous products with very low viscosity. They become solution partners in many sectors with the advantages they provide.

Features and Advantages

- Favorable for the transfer of high density products
- High performance Maximum 50 m³ / h and 18 BAR model range
- Product storage with range hood
- Material durability with the feed screw
- Bridging and gapless product transfer
- Transfer of products having solid particles
- Different customized sealing solutions (Smooth - Mechanical)
- Optional heating and cooling jackets
- Different solutions of stainless steel or other alloy steel equipment
- Different rubber types (EPDM - NBR - NR - VITON)

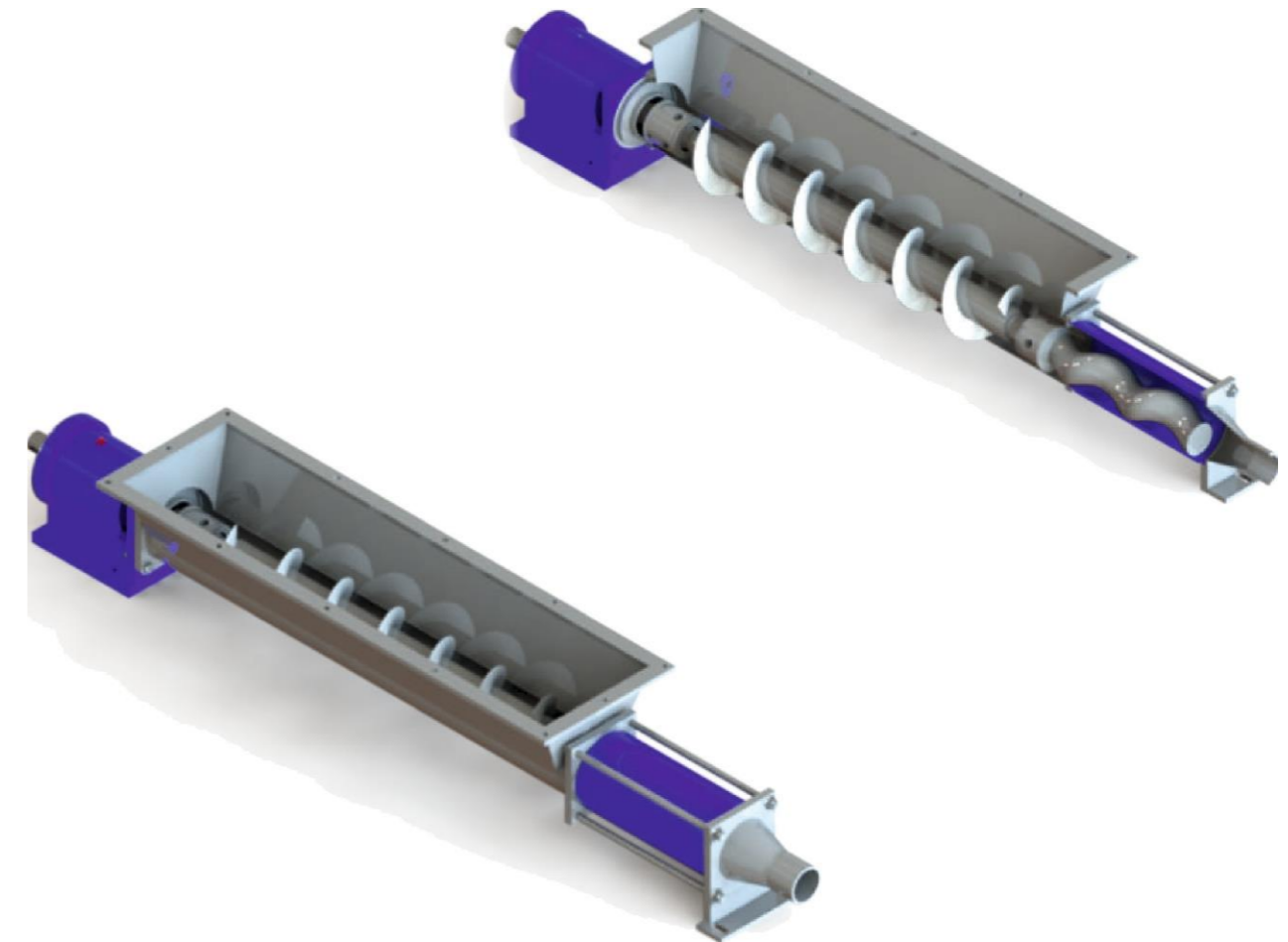


► RK-SERIES Mono Pumps

These pumps having a record connection are mainly preferred in the dairy, drink, food, and beverage sectors. Rapid connection availability is among the reasons of preference. It is a product designed for clean and healthy product transfer. They become solution partners in many sectors with the advantages they provide.

Features and Advantages

- Suction Max 4 meters
- High performance Maximum 30 m³ / h and 24 BAR model range
- Fork joint option for hygienic pumps
- Pump inlet option connection at Right - Left - Upright positions
- Different customized sealing solutions (Smooth - Mechanical)
- Optional washing inlets and discharges
- Optional heating and cooling jackets (Wall)
- Different solutions of stainless steel or other alloy steel equipment
- Different rubber types (EPDM - NBR - NR - VITON)

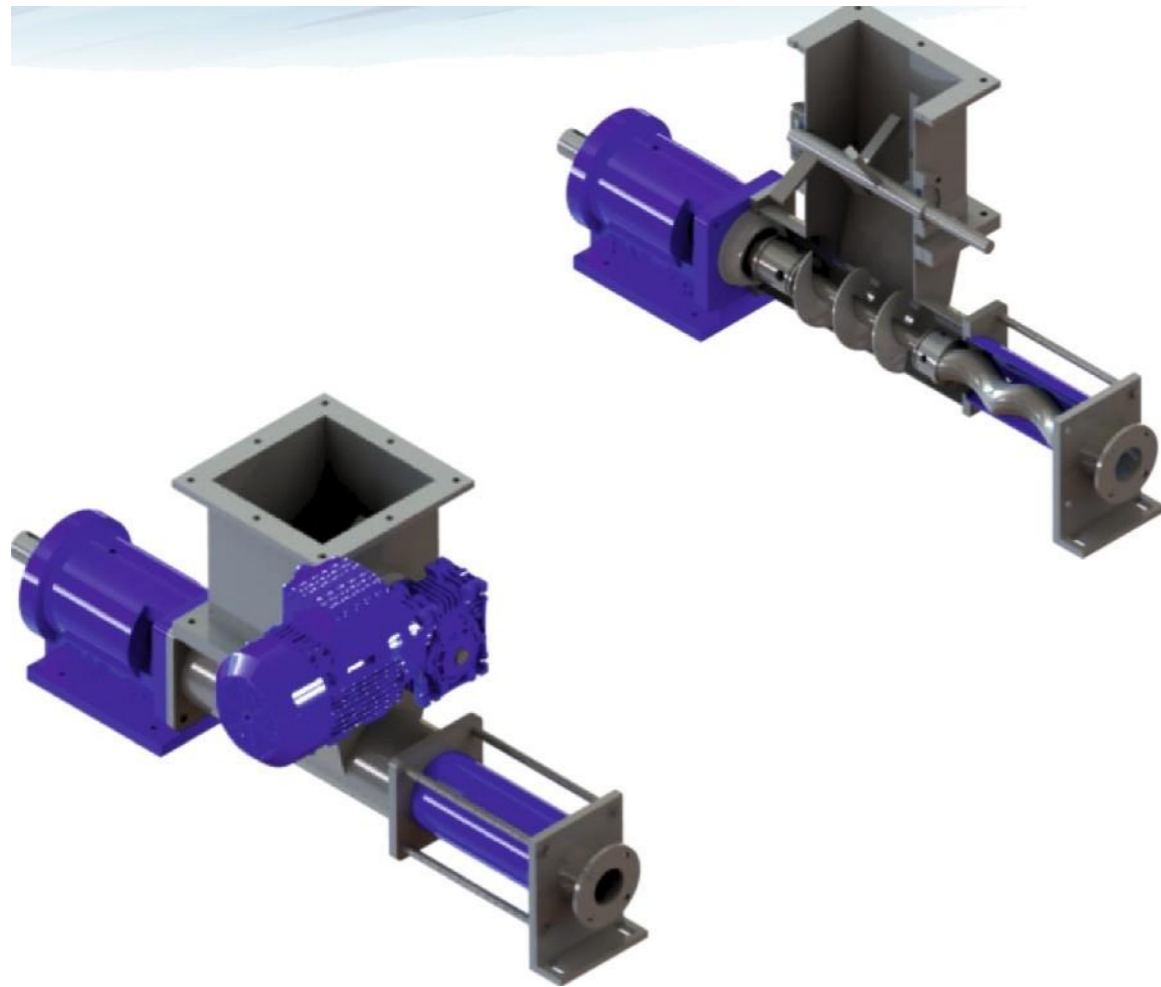


► BAH-SERIES Mono Pumps

These pumps having a large open mouth chamber inlet are favorable in industrial areas. These models are used in products having a high amount of dry matter content. Generally, products like a cake that occur after the wastewater sludge dewatering process are also favorable. They become solution partners in many sectors with the advantages they provide.

Features and Advantages

- Favorable for the transfer of high density products
- High performance Maximum 20 m³ / h and 6 BAR model range
- Product storage with range hood
- Material durability with the long-lasting feed screw
- Bridging and gapless product transfer
- Transfer of products with a high amount of dry matter
- Different customized sealing solutions (Smooth - Mechanical)
- Optional heating and cooling jackets
- Different solutions of stainless steel or other alloy steel equipment
- Different rubber types (EPDM - NBR - NR - VITON)

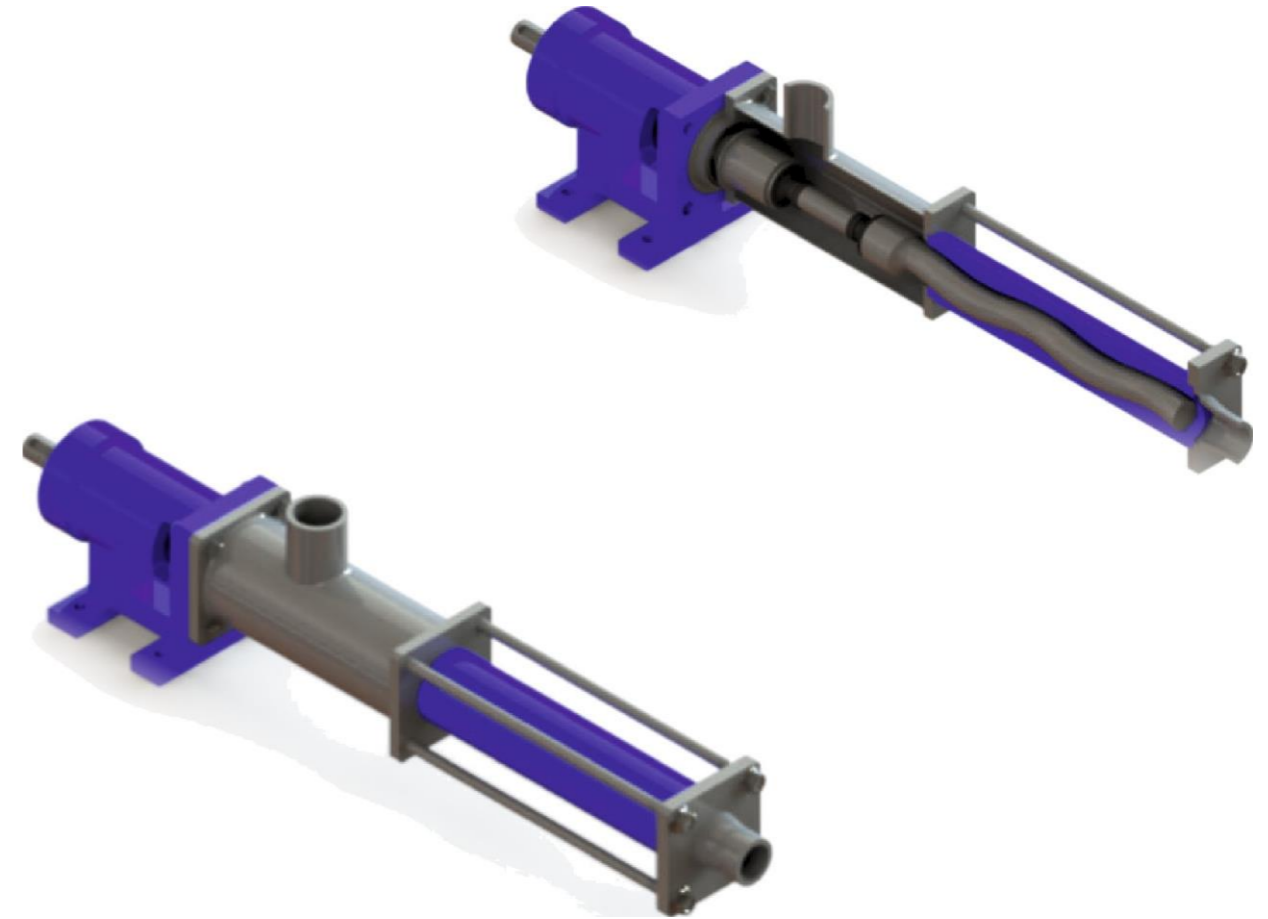


► KR-SERIES Mono Pumps

These pumps having mixer and square inlets are favorable in foods and industry. These models are used in non-fluid products having a high viscosity. Their mixer facilitates the fluidity of the product during pump transfer by keeping the product homogeneous for a long time to products that need to be broken down, dried and stuck. It is controlled by reducer and motor, regardless of pump transfer speed. Special felts are used for sealing. They become solution partners in many sectors with the advantages they provide.

Features and Advantages

- Favorable for the transfer of high density products
- High performance Maximum 20 m³ / h and 18 BAR model range
- Product storage with range hood
- Shredding large pieces thanks to the mixer blades
- Material durability with the feed screw
- Bridging and gapless product transfer
- Transfer of large masses after shredding
- Different customized sealing solutions (Smooth - Mechanical)
- Optional washing inlets and discharges
- Different solutions of stainless steel or other alloy steel equipment
- Different rubber types (EPDM - NBR - NR - VITON)

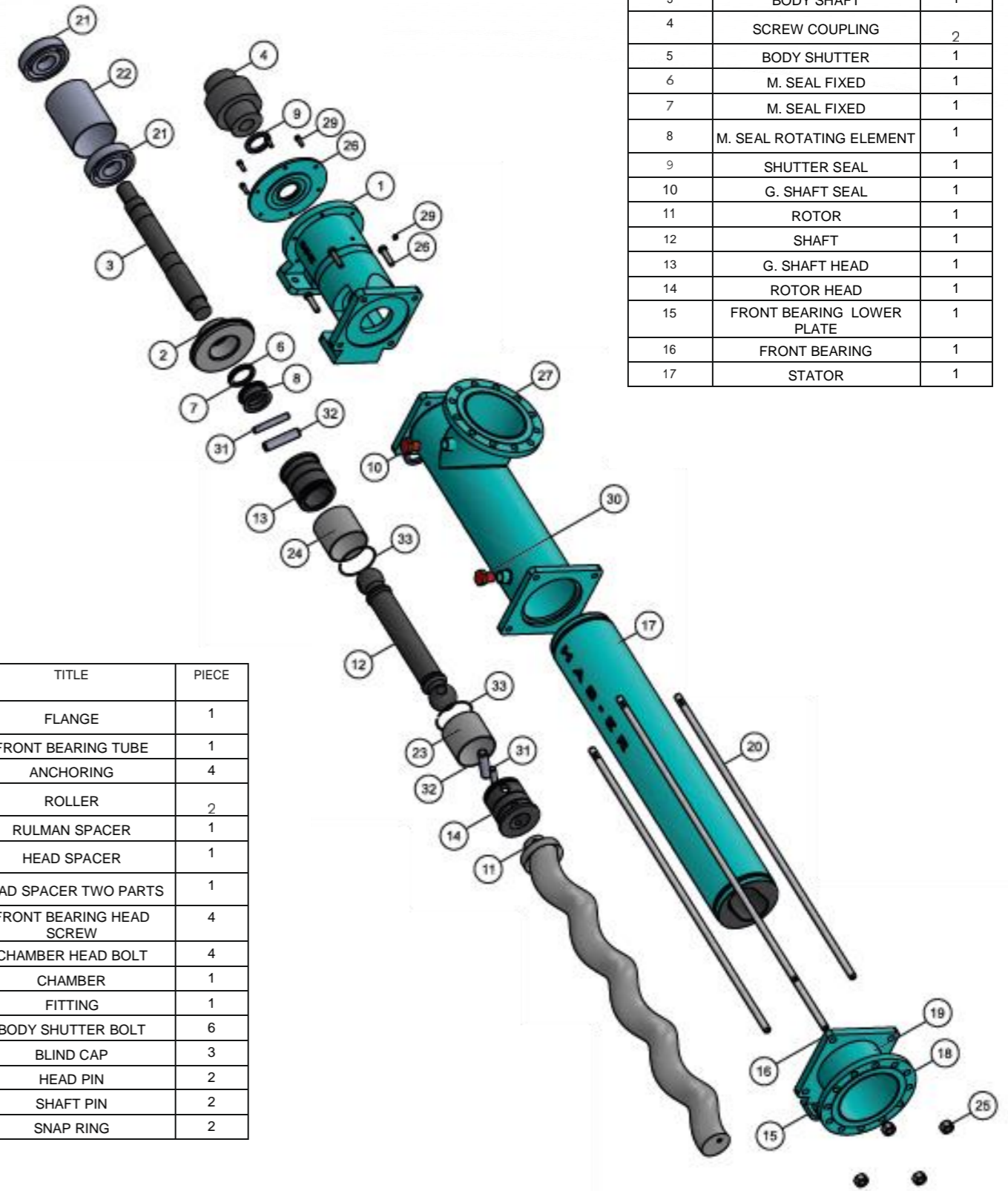


► MN-SERIES Mono Pumps

These pumps with muff entry are mainly used in foods and industries. It is favorable in fluid and semi-fluid products when vacuum is a must. It has a robust, durable, and very ergonomic design. Favorable for low capacity and dosing purposes. They become solution partners in many sectors with the advantages they provide.

Features and Advantages

- Suction Max 4 meters
- High performance Maximum 4 m³ / h and 24 BAR model range
- High pressure resistance thanks to the muff connection
- Pump inlet option connection at Right - Left - Upright positions
- Different rubber types (EPDM - NBR - NR - VITON)



PART NUMBER	TITLE	PIECE
1	BODY	1
2	COAL BED	1
3	BODY SHAFT	1
4	SCREW COUPLING	2
5	BODY SHUTTER	1
6	M. SEAL FIXED	1
7	M. SEAL FIXED	1
8	M. SEAL ROTATING ELEMENT	1
9	SHUTTER SEAL	1
10	G. SHAFT SEAL	1
11	ROTOR	1
12	SHAFT	1
13	G. SHAFT HEAD	1
14	ROTOR HEAD	1
15	FRONT BEARING LOWER PLATE	1
16	FRONT BEARING	1
17	STATOR	1

PART NUMBER	TITLE	PIECE
18	FLANGE	1
19	FRONT BEARING TUBE	1
20	ANCHORING	4
21	ROLLER	2
22	RULMAN SPACER	1
23	HEAD SPACER	1
24	HEAD SPACER TWO PARTS	1
25	FRONT BEARING HEAD SCREW	4
26	CHAMBER HEAD BOLT	4
27	CHAMBER	1
28	FITTING	1
29	BODY SHUTTER BOLT	6
30	BLIND CAP	3
31	HEAD PIN	2
32	SHAFT PIN	2
33	SNAP RING	2

FIELDS OF APPLICATION



Environment

- Wastewater and Sludge Treatment
- Sludge removal
- Dewatered Sludge Treatment
- Measurement of Chemical Additives (Polymers)



Petroleum and Petrochemical

- Petroleum and Petrochemical Industry
- Gas Industry
- Probing Fluids
- Oil-Water Separation



Chemical

- Chemical and Biochemical Industry
- Cosmetics Industry
- Pharmaceutical Industry
- Paint and varnish Industry
- Measurement (Metering Chemical Additives)



Foods and Beverages

- Food and Beverage Industry - Wine Industry
- Olive Oil Industry
- Fishing Industry
- Milk and Dairy Industry
- Sugar Industry
- Drinks and Beer Industry



Other Industries

- Agriculture
- Construction
- Ship Building
- Paper Industry
- Automotive Industry
- Woodworking

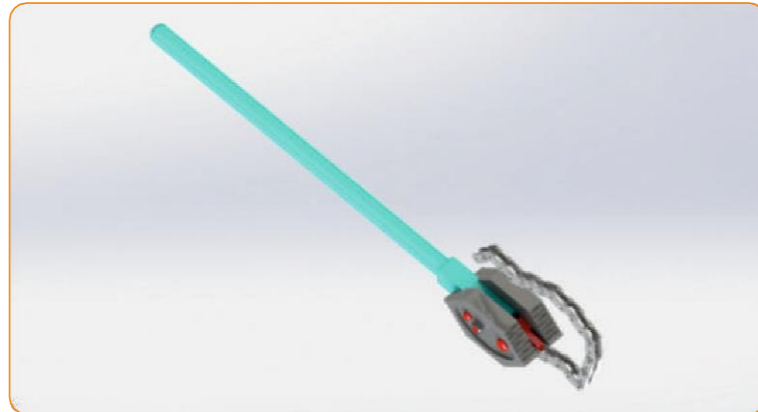
• The fields of application specified for mono pumps are as above.

• If you want to transfer products other than these specified products, you may need to send us information about the product and send us some samples.

• You can specify the product groups as steel, if the product to be transferred is not included in the food and chemical industries.

► Chained Pipe Wrench

Produced by us, these switches, which are produced in two different models with 2" - 4" and 4" - 8" chain length options, cast for the need of strong tightening of the pump stator and transmission elements in the cases of assembly and disassembly.



► Frequency controller (inverter)

Cooperating as a solution partner with different firms, we offer some solutions to our customers in this regard. We provide services in line with customer needs in frequency control device and panel groups required by pumps cooperating with the leading firms of the sector.



► Sensors

Cooperating as a solution partner with different firms, we offer some solutions to our customers in this regard. We offer sensor-related solutions on pump-free operation protection systems in line with the needs and demands of our customers cooperating with the leading firms of the sector. Product transition monitoring is provided in the scada system with the pump inlet and pump outlet product imaging sensors.



ROTOR



STATOR



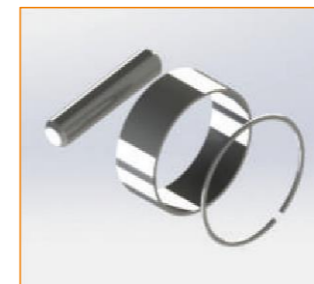
BODY SHAFT



SHAFT



PACKING



REPAIR SET



BELLOWS TIRE



DUST SEAL



CONNECTION HEAD

► SPARES

- All of the parts in our pumps are produced by our firm. You can take spares on the same day from our firm having high stock of spares.
- With the label coding and serial numbers on our pumps, your orders will be accurate and safe. We recommend you keep the label information on the pump.

